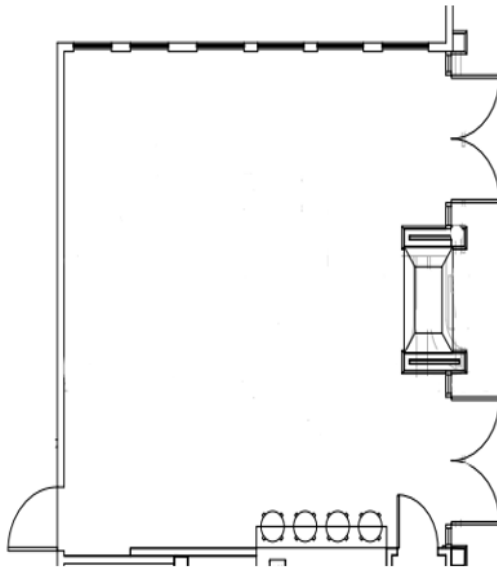


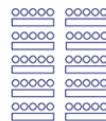


Room Diagrams and Configurations

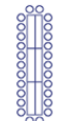


The Captain's Quarters
(Private Dining Space)

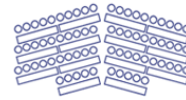
Meeting Room Layouts



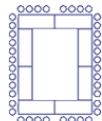
Classroom



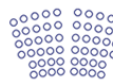
Conference



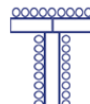
Chevron



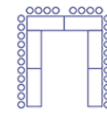
Boardroom



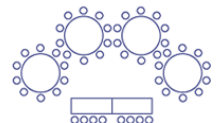
Theatre



T-Shape



U-Shape



Banquet

All accounts must be settled prior to or on the day of the event. Any changes to quantities of food ordered must be requested at least 3 days prior to event. 20% service charge applied to all food & beverage charges. 7.85% tax applied to all charges unless tax exempt. Tax capped at \$39.25.

Version: 11/15/2023